

Tube-sheet Coating to repair a problem with Galvanic Attack

Case:

Carbon steel tube sheet and skeleton with a 1/4" stainless tube sheet cladding and tubes.

Client:

PDVS Curacao Refinery (heat exchanger)
500 tubes (1,000 tube ends)
3/4" OD and 20' long

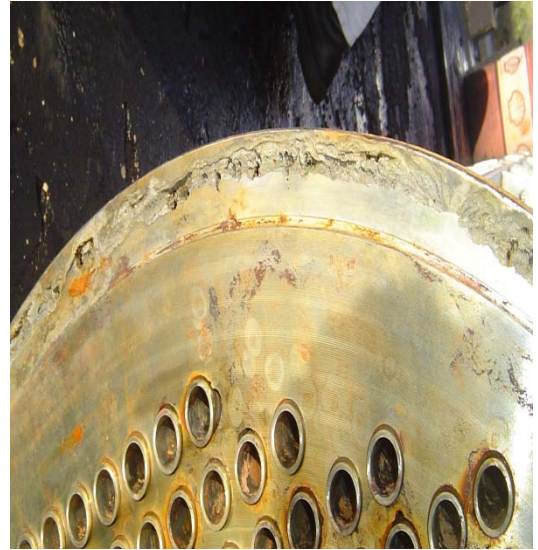
Solution:

Curran International mobilized to the job site, performed surface preparation, and applied 30-40 mils of an Curran Ambient cured epoxy to tube-sheets and 3-4 inches down tube.

Pictures shows the severity of the galvanic attack.



Damage can be seen affecting the out side of the tube-sheet and the gasket area



Tube-sheet being machined to attain the desired coating thickness on the gasket areas



Curran^ointernational

Applying coating solutions

Chiller after completion of coating application. Client able to insert coated chiller and has eliminated the galvanic attack problem. Curran has since coated 3 additional chillers for this client. All work done according to NACE procedures for surface preparation and coating application.

